

17:20–17:45 | Breakout Session: NaaS for AI – Where Context Meets Intelligence



DEEPAK KARPOOR

CEO



KARAGREY

MICHAEL KEARNS

Co-Founder & Chief Strategy Officer



amartus

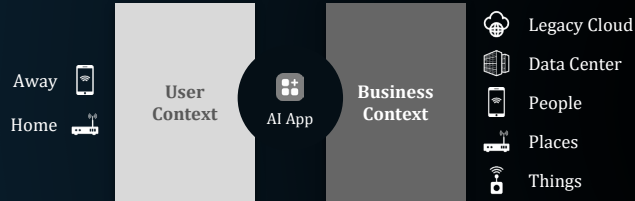
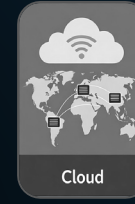
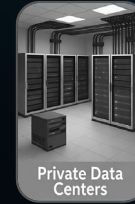


Why is the network changing?

What new requirements does AI demand?

How can we enable this evolution today?

Changes in compute architecture has always driven **changes in network architectures**



Every network service is a **data conduit for AI**

The largest consumer of AI is changing. Current experiences may not **serve the new master?**



Why? The Network's Purpose is Evolving

NaaS for Humans

Purpose:

Connect **end users** to business applications and resources.

Connections:

Human-to-System.

Network Nature:

Relatively **deterministic and static**.

NaaS for AI

Purpose:

Support the **distributed AI environment** and application needs

Connections:

1. Human-to-AI Agent.
2. AI Agent-to-AI Agent.
3. AI Agent-to-AI App.

Network Nature:

Bandwidth hungry and **bursty** in places, **latency sensitive** in others, **dynamic across edge and core**



What? New Requirements for NaaS for AI

Shift from human-optimized to machine-optimized services drives few critical new requirements:

① Programmability

span across and integrated
across all layers

② Security Integration

security and sovereignty in
transit

③ Network Currency

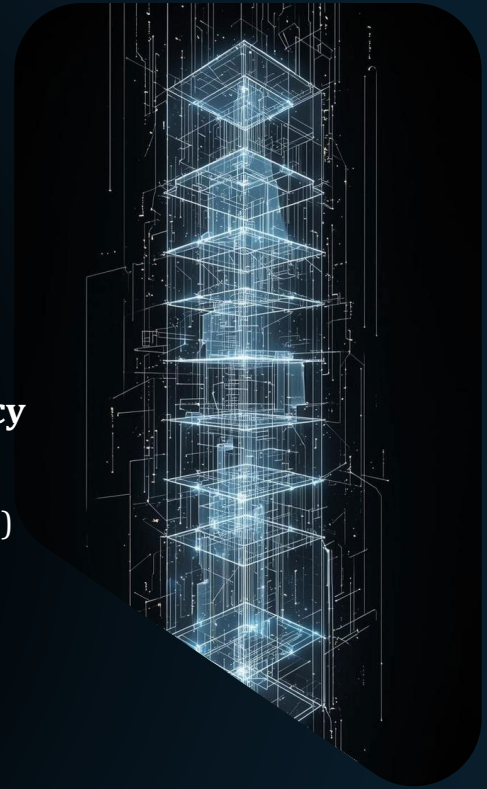
Bandwidth to new
currencies (energy, more)

④ Design Assumptions

Human tolerance to machine
intolerance

⑤ Billing Granularity

move from monthly
(proration) to transaction
duration (cloudify)



How? Mplify LSO is the Key Enabler

The ecosystem maturity needs step function changes

① Enable Mplify API

making the network on-demand **across all layers (L1-L3)**.

② Evolve the BSS/OSS

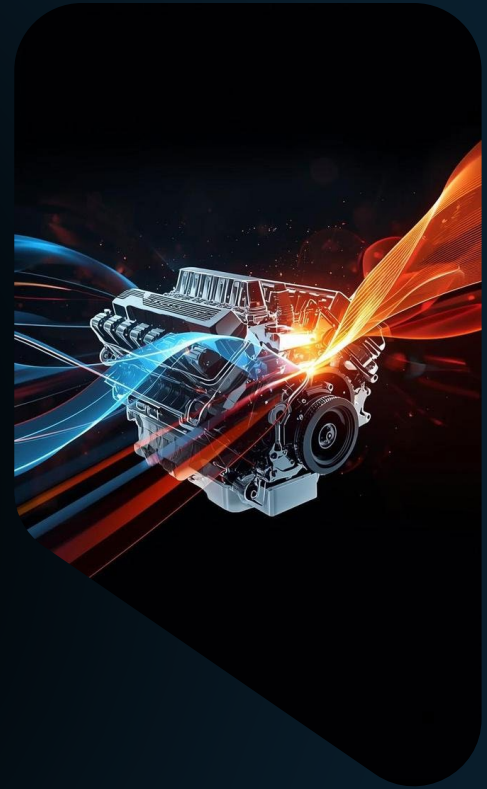
to support **granular service telemetry** and billing

③ New models of Network & Capital Planning

Optimize the use of limited network **capacity and capital on demand**, explore fractional infrastructure enablement

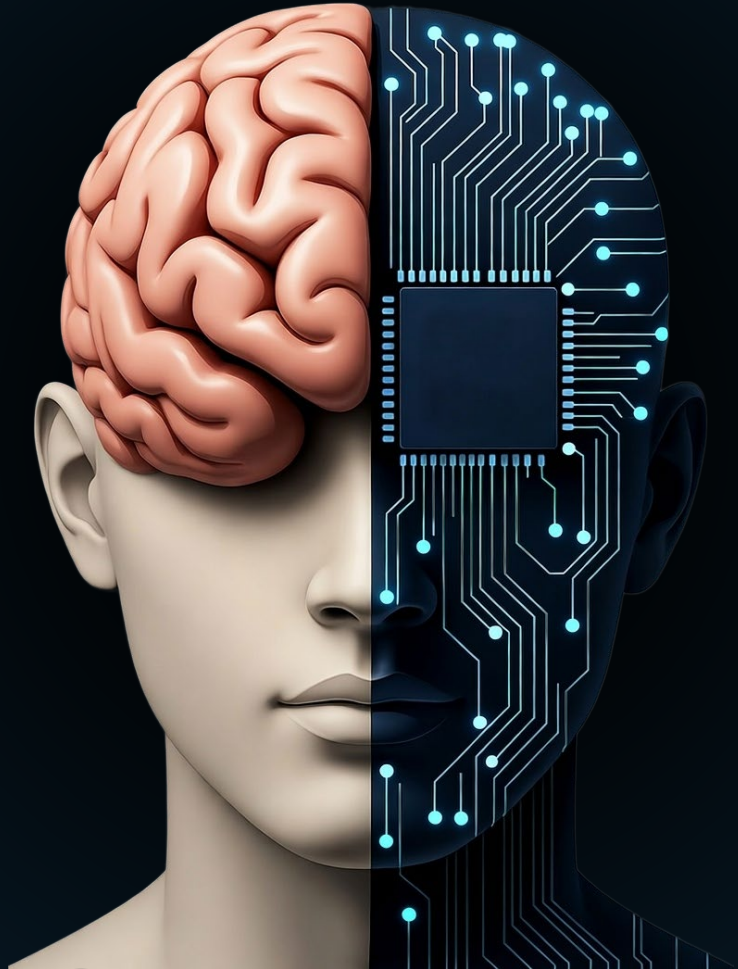
④ AI Ecosystem Integration

extend integrating leveraging AI preferred integration models like **MCP and A2A**



In the human era,
**NaaS simplified
connectivity
infrastructure**

— offering
centralized
command and
control.



In the AI era,
**NaaS becomes
cognitive
infrastructure**

— learning,
adapting, and acting
alongside
intelligence itself.

We built networks and APIs to support human centric operations. Now we must **build for intelligence to evolve.**

From connectivity infrastructure to cognitive infrastructure — the shift is already underway.

Mplify is the forum where we, as an ecosystem, define how networks will think, decide, and scale in the AI era.

Join us — not to keep up with AI, but to help it move.



Global NaaS Event