

16:30–17:20 | Breakout Session: NaaS Ecosystem Certification Programs for the AI Era



DANIEL BAR-LEV

Chief Product Officer



DIVESH GUPTA

VP, Professional
Services &
Technology; Mplify,
Co-Chair of Test &
Certification Cmte.



MARK BENNETT

Portfolio Lead Fixed
Connectivity



SAMARESH NAIR

Director Product
Management



MICHAEL KEARNS

Co-Founder & Chief
Strategy Officer



**ISABELLE
MORENCY**

Director, Product
Management



Console Connect earns the first Mplify LSO API Certification

PCCW Global



(Haley Rel.)



"Mplify's LSO APIs are the operating system for multi-provider automation. This certification **program removes integration friction, builds trust at scale**, and provides a clear on-ramp to global NaaS. **Console Connect's** leadership demonstrates what's possible when innovation aligns with open standards." August 25, 2025

Pascal Menezes, CTO
Mplify Alliance



"As the industry moves towards a fully automated, multi-provider environment, standardization becomes critical. Mplify's LSO API **certification provides a trusted path to interoperability**, streamlining integration and reducing time-to-market."

Rob Schult, Research Director,
TeleGeography.

PCCW Global

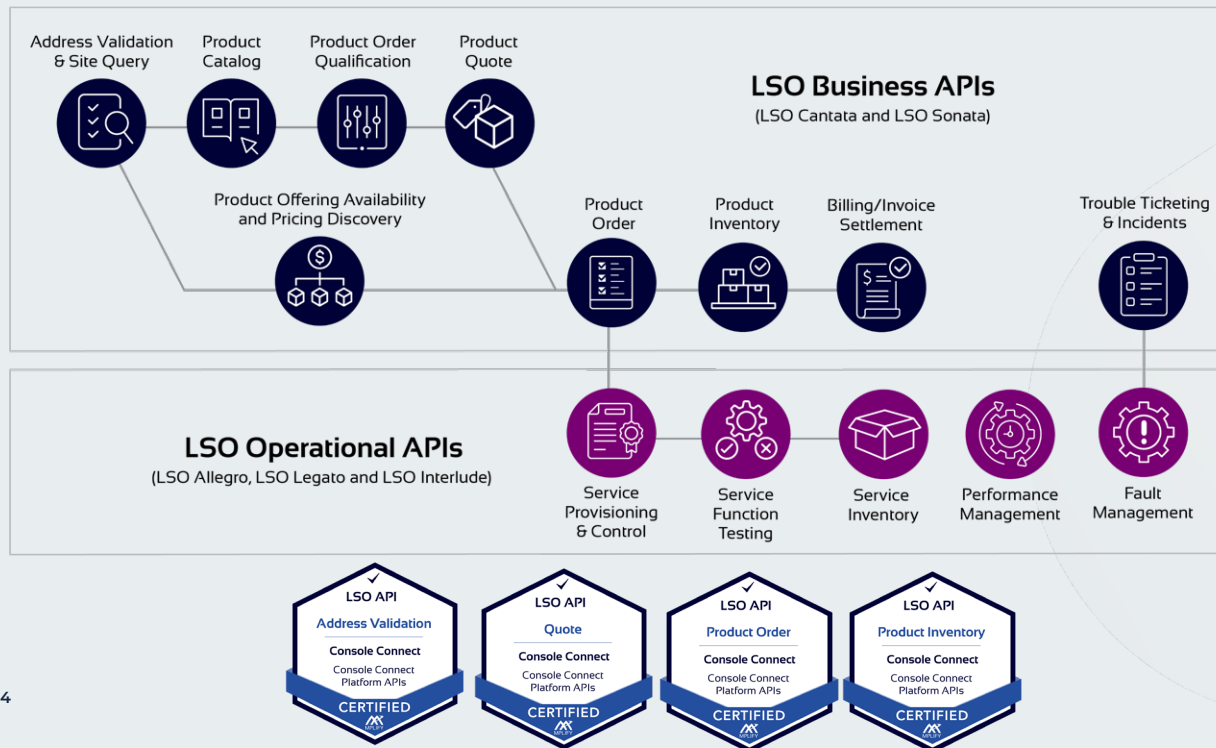


"Our latest certification with Mplify represents a major milestone for Console Connect. It shows our ongoing **commitment to standardized APIs** which are fundamental to increasing scalability and establishing a more collaborative, **API-driven connectivity model**."

Paul Gampe, CTO,
PCCW Global

MEF LSO certification

Certification is the glue that holds the NaaS ecosystem together in the AI era — it ensures interoperability, builds trust, and accelerates adoption across a truly global, federated environment."

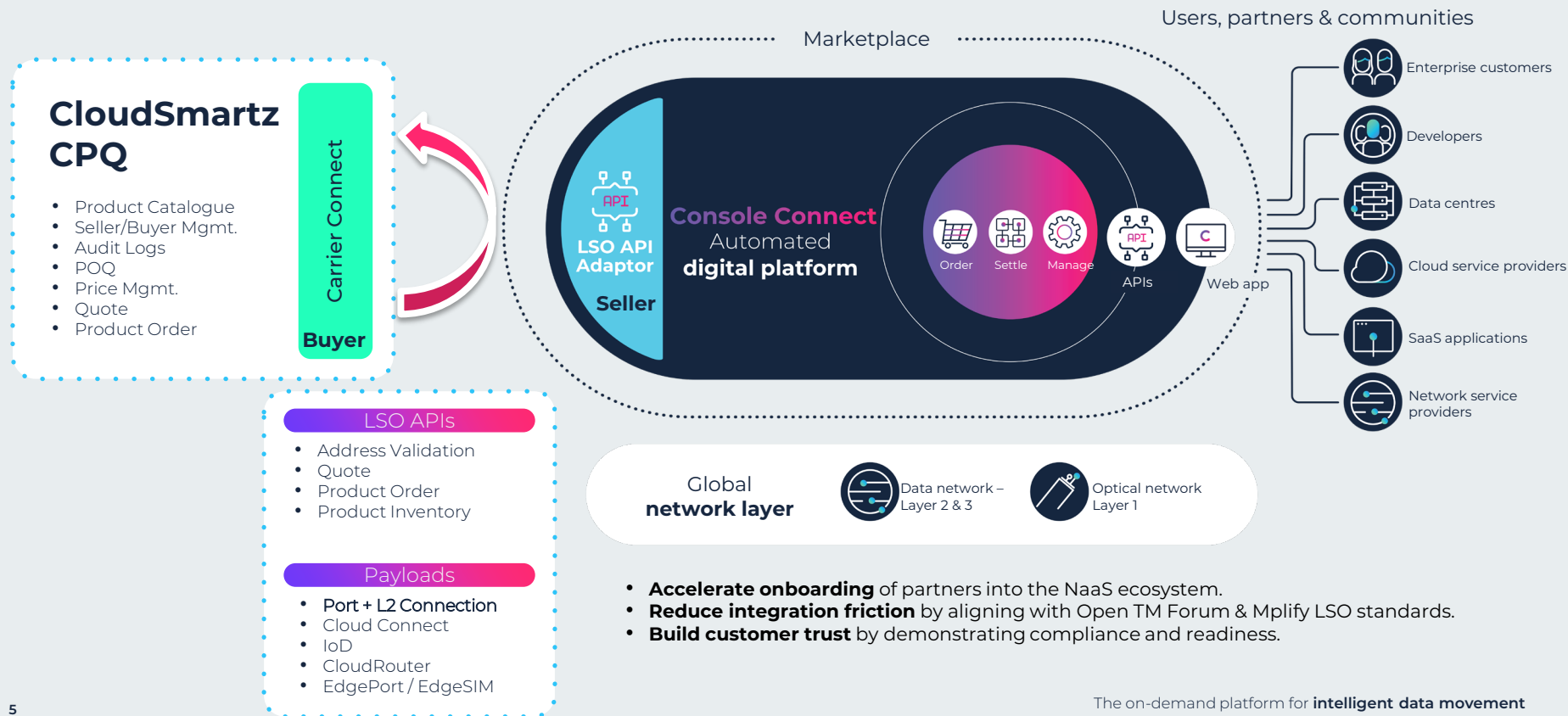


Releases

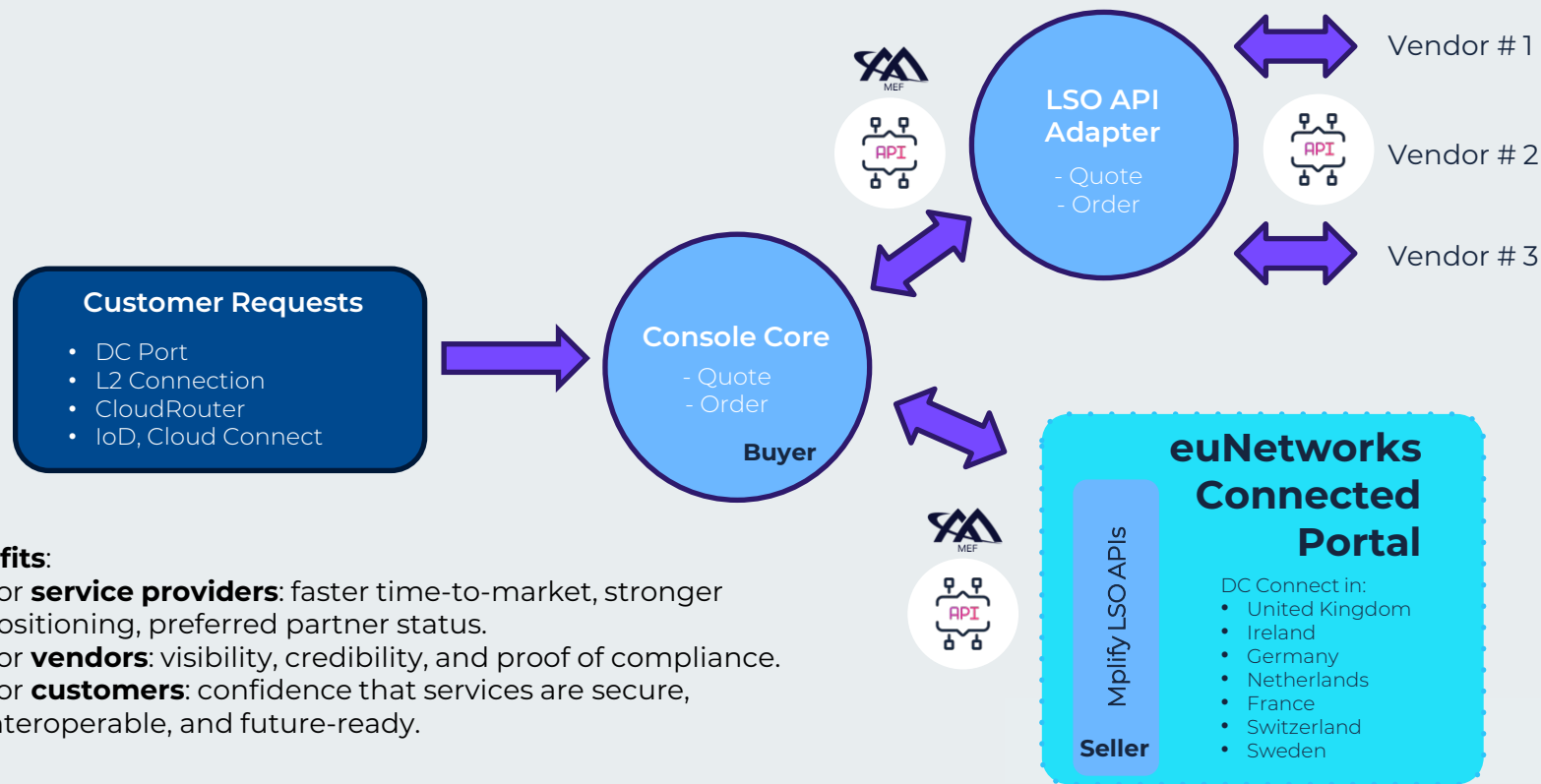
New versions of the LSO API SDKs are released approximately every 6 months, since December 2020, each release has been named alphabetically:

- Janis: June 2025
- Irene: December 2024
- Haley: June 2024**
- Grace: December 2023
- Fergie: June 2023
- Ella: January 2023
- Dolly: June 2022
- Celine: January 2022
- Billie: June 2021
- Aretha: December 2020

Use Case #1: Console Connect as “Seller”



Use Case #2: Console Connect as “Buyer”



Benefits:

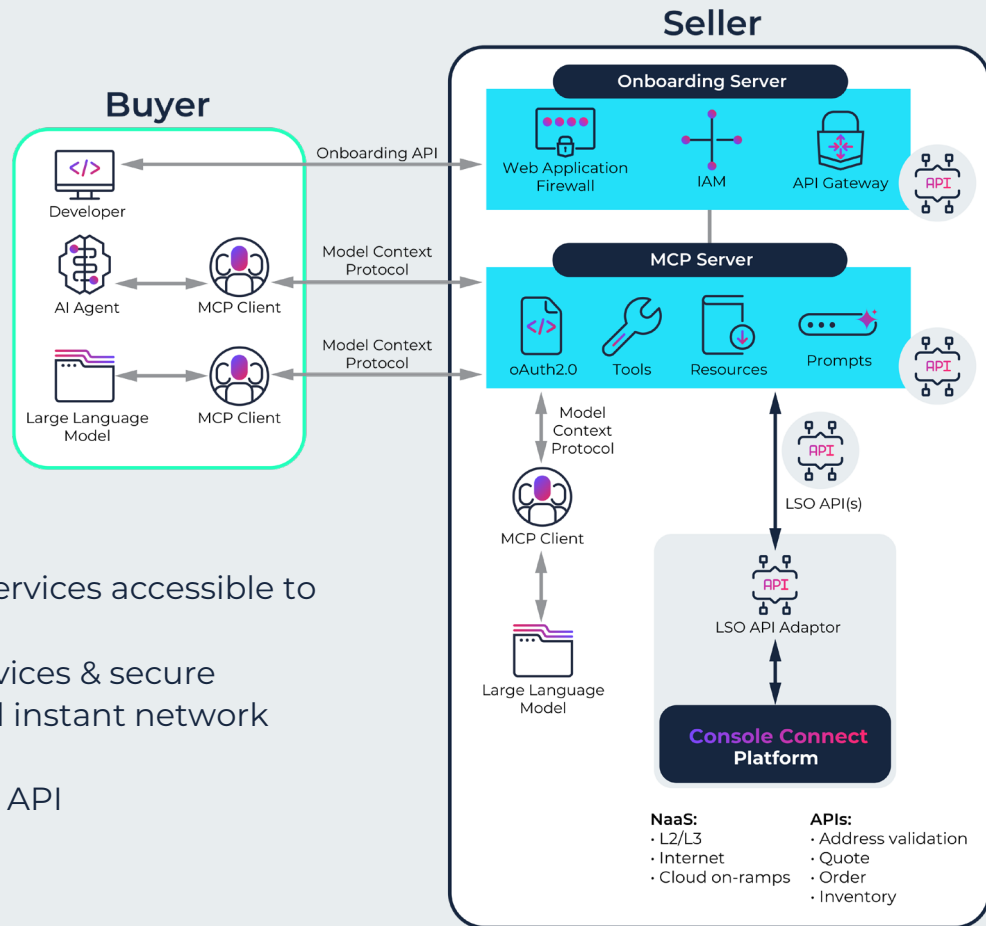
- For **service providers**: faster time-to-market, stronger positioning, preferred partner status.
- For **vendors**: visibility, credibility, and proof of compliance.
- For **customers**: confidence that services are secure, interoperable, and future-ready.

MCP & Agentic AI – for NaaS

How a Tier-1 CSP cut integration times
by 50% using MCP + Agentic AI

Impact & Benefits

- Reduced integration time by 50% or more..
- Agentic AI makes complex telecom network services accessible to any business user—just ask in plain language.
- **Futureproof:** Easily extendable to new API services & secure
- No code. No plugins. Just English prompts and instant network automation.
- **Future Mplify Certification:** MCP Server + LSO API





Global NaaS Event